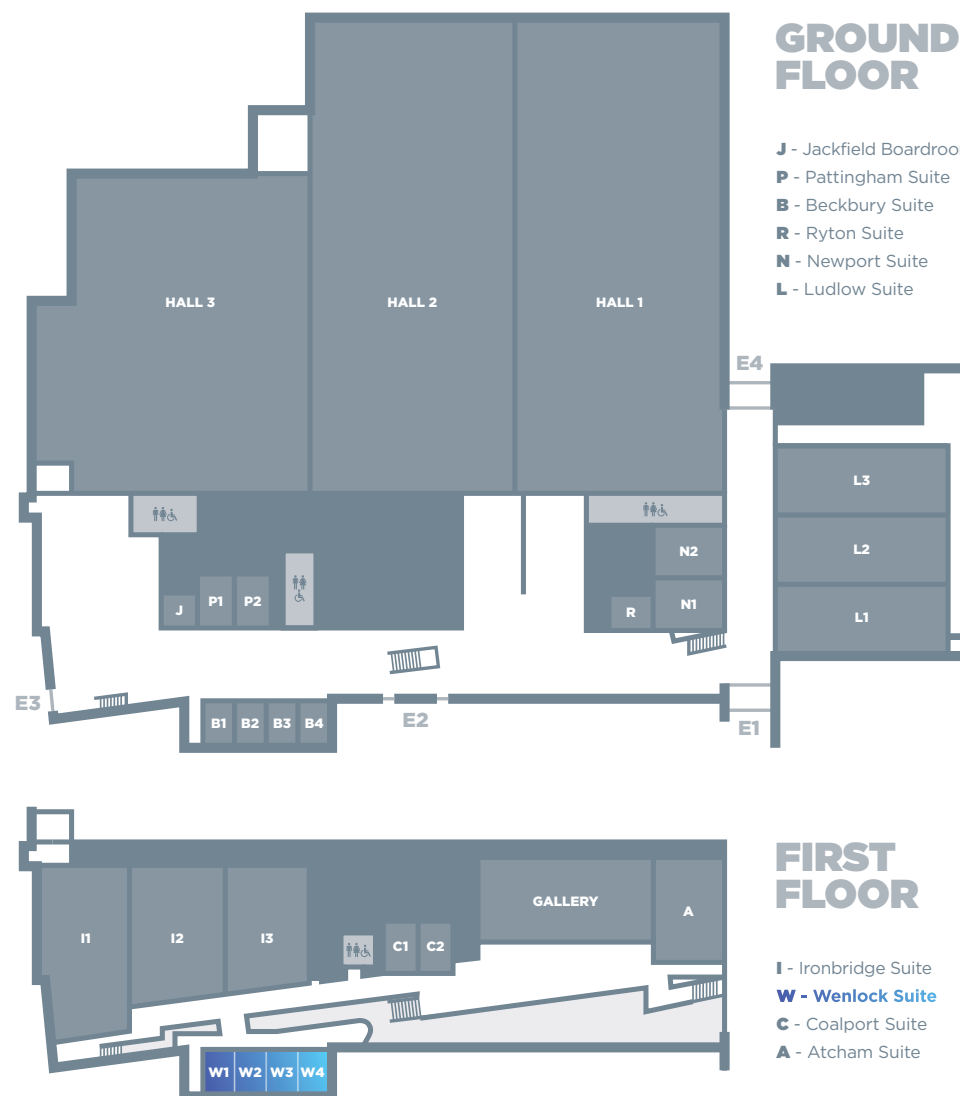


WENLOCK SUITE

A flexible space, which can be configured for dinners, exhibitions, break-out discussions or reception drinks. It can be used as one large space or broken down into four smaller spaces (or any configuration thereof). Right opposite the Ironbridge Suite, the Wenlock Suite benefits from south-facing ceiling to floor windows, which lets in lots of natural daylight.

	WENLOCK	W1 / W2 / W3 / W4
DIMENSIONS	25m x 8.3m	6.25m x 8.3m
SIZE	208m ²	52m ²
HEIGHT	3.1m	3.1m
THEATRE	240	60
CLASSROOM	120	30
BOARDROOM	-	24
RECEPTION	280	70
BANQUETING	160	40
CABARET	104	32



Your best event yet



Your best event yet